

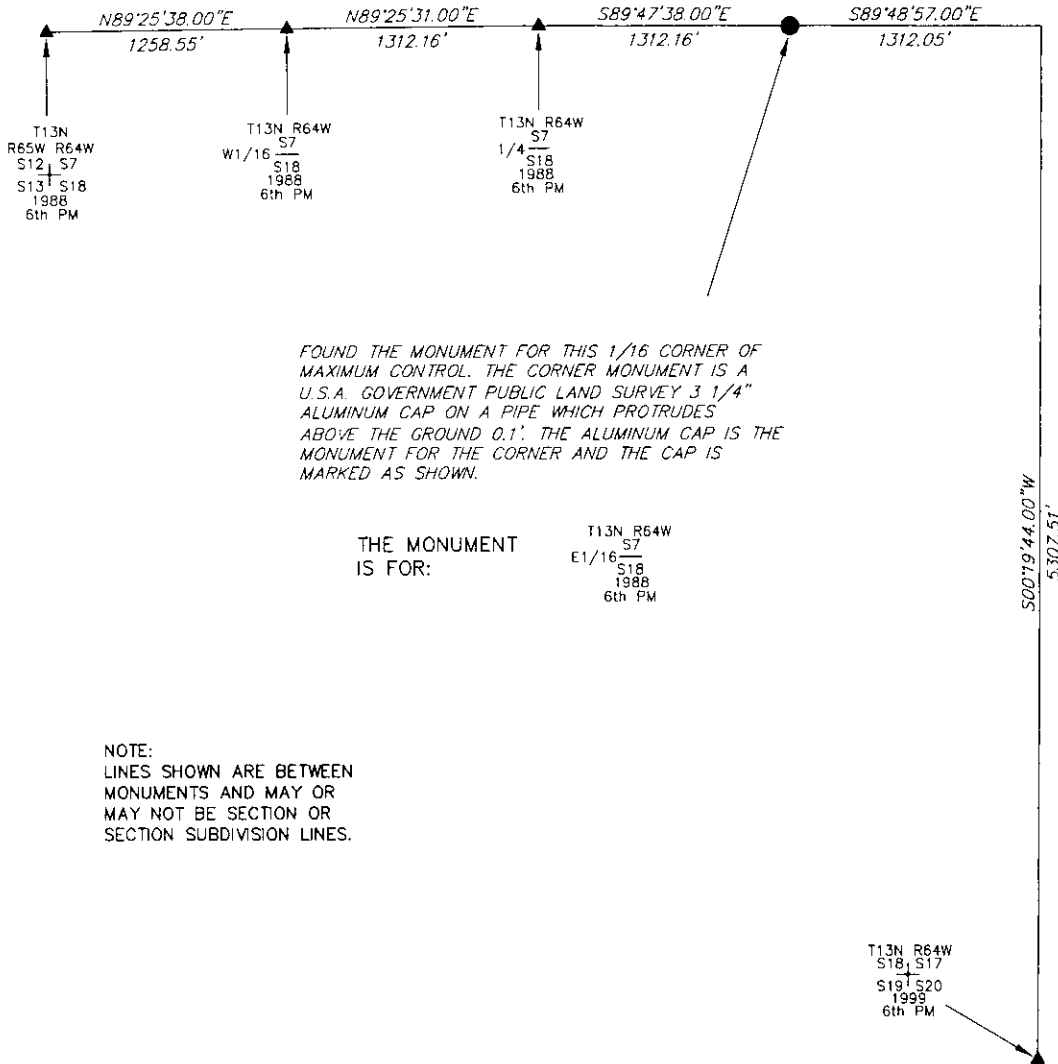
State of Wyoming Corner Record

CORNER PERPETUATION AND FILING ACT,

Regulations of the Board of Registration for Professional Engineers and Land Surveyors.)

Reverse side of this form may be used if more space is needed.

Record of original survey and citation of source of historic information (if corner is lost or obliterated). Description of corner monumentation evidence found and/or monument and accessories established to perpetuate the location of this corner. Sketch of relative location of monument, accessories, and reference points with course and distance to adjacent corner(s) (if determined in this survey). Method and rationale for reestablishment of lost or obliterated corner.



FOUND THE MONUMENT FOR THIS 1/16 CORNER OF MAXIMUM CONTROL. THE CORNER MONUMENT IS A U.S.A. GOVERNMENT PUBLIC LAND SURVEY 3 1/4\" ALUMINUM CAP ON A PIPE WHICH PROTRUDES ABOVE THE GROUND 0.1'. THE ALUMINUM CAP IS THE MONUMENT FOR THE CORNER AND THE CAP IS MARKED AS SHOWN.

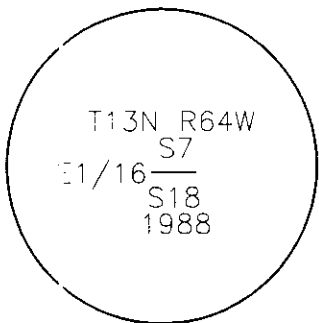
THE MONUMENT IS FOR:

T13N R64W
E1/16 S7
S18
1988
6th PM

NOTE:
LINES SHOWN ARE BETWEEN MONUMENTS AND MAY OR MAY NOT BE SECTION OR SECTION SUBDIVISION LINES.

T13N R64W
S18, S17
S19, S20
1999
6th PM

SCALE 1"=1000'
(EXCEPT IN TRIVIAL CASES)
BEARINGS ARE RELATED TO WGS 84 WITH GPS OBSERVATIONS
DRAWN BY: AM
P.C. L. PENCE
COUNTY: LARAMIE



THE MONUMENT IS MARKED

CORNER MONUMENT SYMBOLS

- RECORD IS FOR THIS CORNER MONUMENT.
- ▲ A RELATED CORNER OR WC MONUMENT.

Date of Field Work: 04/28/2010 Office Reference: _____

CROSS INDEX DIAGRAM

A	1	2	3	4	5	6	7	8	9	10	11	12	13	14	15	16	17	18	19	20	21	22	23	24	25
B																									
C																									
D																									
E																									
F																									
G																									
H																									
J																									
K																									
L																									
M																									
N																									
O																									
P																									
Q																									
R																									
S																									
T																									
U																									
V																									
W																									
X																									
Y																									
Z																									

Firm/Agency, Address

UELS, LLC

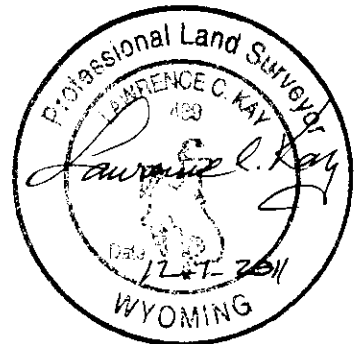
85 South 200 East

Vernal, Utah 84078

Telephone Number: 435-789-1017

This corner record was prepared by me or under my direction and supervision.

SEAL & SIGNATURE



RECORDED 12/08/2011 AT 1:19 PM REC# 581000 BK# 2249 PG# 406
DEBRA K. LATHROP, CLERK OF LARAMIE COUNTY, WY PAGE 1 OF 1

Corner Name: 1/16 CORNER OF MAXIMUM CONTROL EAST 1/16 CORNER OF SECTIONS 18 & 7 Section: 18 T 13N R 64W ; 6TH P.M. Cross Index No.: J-4